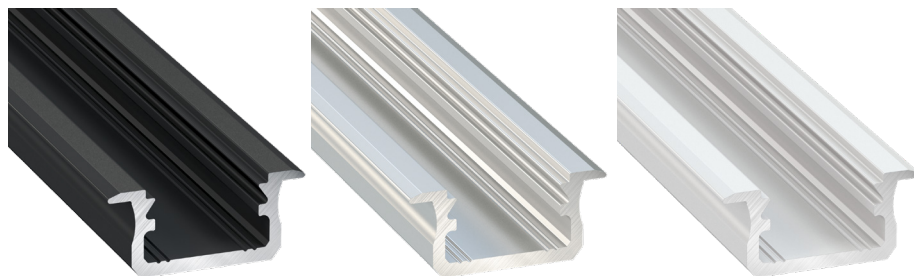
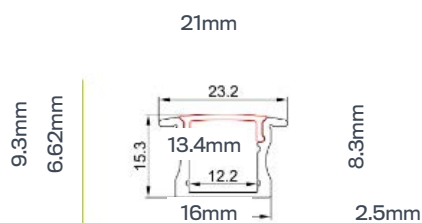


AL-LIP-02



Specification	
LED strip width:	12mm
Colour variations:	Raw
	Black
:	White (RAL9016)
Mounting:	Two-sided Adhesive Tape, Mounting Clip, Pendants
Diffuser	Opal

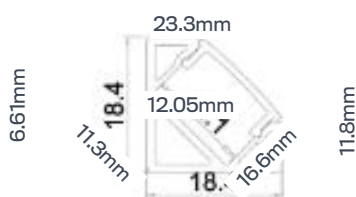
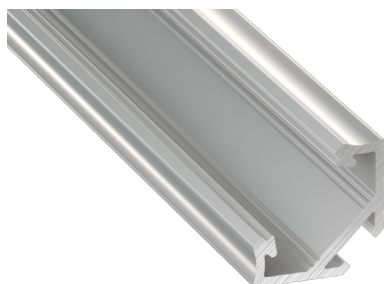


KEY FEATURES

Groove mounted profile - for lighting kitchen and stores. Perfect for lighting shelves and countertops. Easy installation inside a milled groove. The minimum depth of the groove is only 9 mm. The small height of this profile and the flat cover (mounted from the top with a snap-on) give the impression of a very discreet fixture for LED strips and tapes. AL-LIP-02 is ideally suited for use as an element of decorative backlighting in furniture and interior decorations.

Ordering Information		
Code	Colour	Length
AL-LIP-02-AL-WH-2M	WHITE	2000MM
AL-LIP-02-AL-WH-3M	WHITE	3000MM
AL-LIP-02-AL-BK-2M	BLACK	2000MM
AL-LIP-02-AL-BK-3M	BLACK	3000MM
AL-LIP-02-AL-2M	ALUMINIUM	2000MM
AL-LIP-02-AL-3M	ALUMINIUM	3000MM

AL-CAP-01



KEY FEATURES

Angle profile 45 degrees - for lighting kitchens and stores. Ideal for lighting shelves and countertops. Perfectly suitable for designer connections of two perpendicular surfaces and all applications where the light coming from the profile at a 45° angle is required.

The small height of this profile and the flat cover (mounted from the top with a snap-on) give the impression of a very discreet fixture for LED strips and tapes. AL-CAP-01 is ideally suited for use as an element of decorative backlighting in furniture and interior decorations.

Specification	
LED strip width:	Up to 12mm
Colour variations:	Raw
	Black
:	White (RAL9016)
Mounting:	Pressed on to the milled hole or by adhesive tape
Covers (Diffusers)	Opal

Ordering Information		
Code	Colour	Length
AL-CAP-01-AL-WH-2M	WHITE	2000mm
AL-CAP-01-AL-WH-3M	WHITE	3000mm
AL-CAP-01-AL-BK-2M	BLACK	2000mm
AL-CAP-01-AL-BK-3M	BLACK	3000mm
AL-CAP-01-AL-2M	ALUMINIUM	2000mm
AL-CAP-01-AL-3M	ALUMINIUM	3000mm