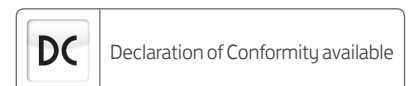
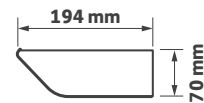
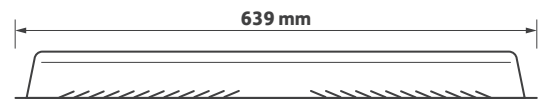


Key Features

- ▶ Professional wall mounted LED uplight
- ▶ Philips LED module and driver system
- ▶ Opal acrylic diffuser for homogeneous illumination
- ▶ Excellent luminaire efficacy of up to 116.3 lm/tcW
- ▶ Presence and daylight sensor options
- ▶ Integral emergency and dimming options
- ▶ Aids LG7 compliance

Technical Drawing



Ordering Information

Output (Lm)	Power (tcW)	Colour	Model Ref.
1625	15	830	162.001
1625	15	840	162.002
2350	23	830	162.003
2350	21	840	162.004
2950	29	830	162.005
2950	25	840	162.006

Options

Please select from the options below.

Black body	/BK
Presence and daylight sensor	/EA
Touch dimming / DALI	/T+DALI
EM conversion	/EM
Please see accessories sheet	Accessories

162 Series Options



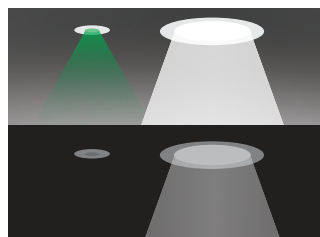
Options



/T+DALI
Touch dimming / DALI

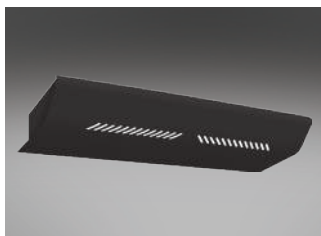


/EA
Presence and daylight sensor



/EM
EM conversion

Finishes



/BK
Black (RAL 9005)

Also Available



Product variations
Other colours and specifications
available on request