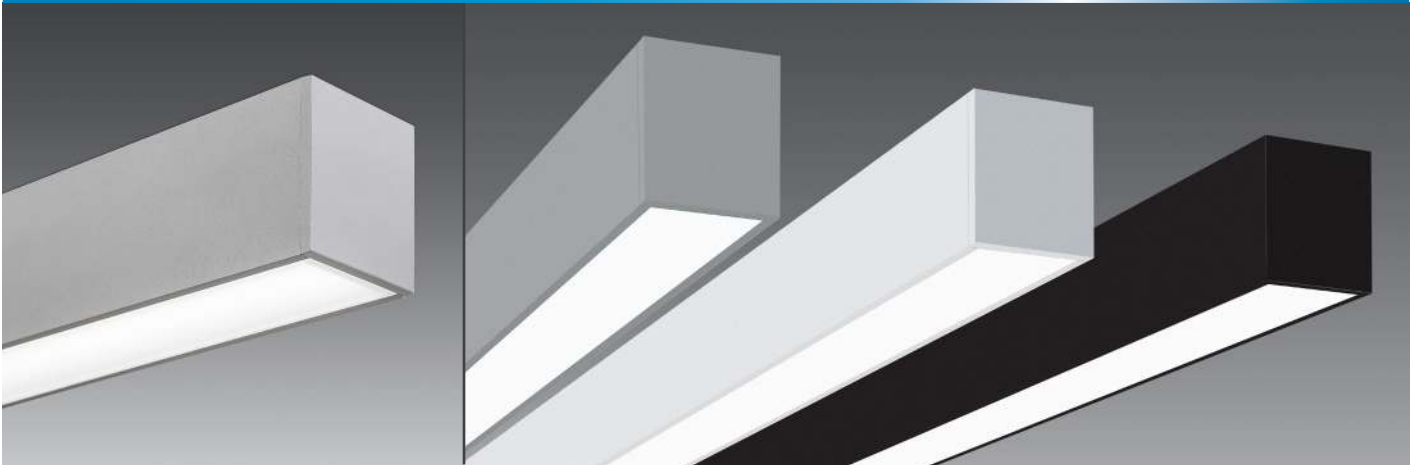


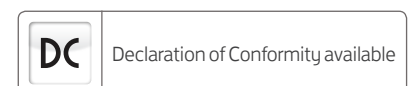
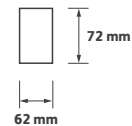
163 Series Datasheet



Key Features

- ▶ Direct, extruded linear profile luminaire
- ▶ Suitable for surface mount or suspension fixing
- ▶ Finished in RAL 9006 grey as standard
- ▶ Available in 4 standard lengths
- ▶ Delivering approx. 2200lm per meter as standard
- ▶ Coloured matched, injection moulded end caps
- ▶ TPa opal lens for feature, general and visual areas
- ▶ Low Glare prismatic lens available for office and LG7 compliance
- ▶ Tridonic low energy LED and driver system
- ▶ Life up to >60,000 hours L80/F10
- ▶ Efficacy up to 120 Lm/Tcw
- ▶ Manufactured in the U.K.

Technical Drawing



Ordering Information

Length	Colour	Output (Llm)	Model Ref.	Output (Llm)	Output (Llm)
		Std		/LO	/HO
850 mm	830	1850	163.001	1300	2750
850 mm	840	1850	163.002	1300	2750
1.2 mtr	830	2750	163.003	1925	4100
1.2 mtr	840	2750	163.004	1925	4100
1.5 mtr	830	3375	163.005	2375	5025
1.5 mtr	840	3375	163.006	2375	5025
2.5 mtr	830	5525	163.007	3875	8225
2.5 mtr	840	5525	163.008	3875	8225

Options

Please select from the options below.

White Body	/WH
Black Body	/BK
Lower output	/LO
Higher output	/HO
Low glare prismatic lens for LG7 compliance	/LG
SwitchDIM, DALI or DSI	/ECO
EM conversion	/EMI

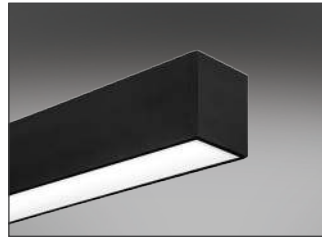
163 Series Options and Accessories



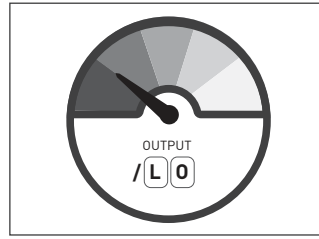
Options



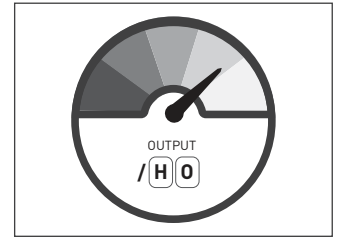
/WH
White Body



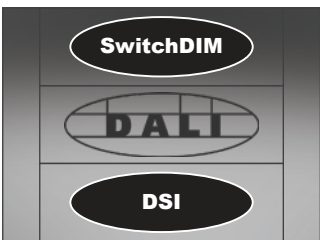
/BK
Black Body



/LO
Lower output



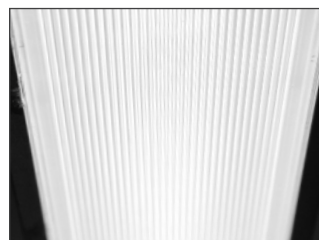
/HO
Higher output



/ECO
SwitchDIM, DALI or DSI

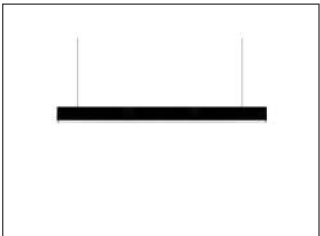


/EMI
EM conversion



/LG
Low glare prismatic lens

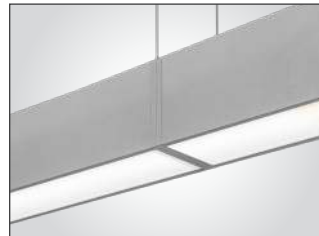
Accessories



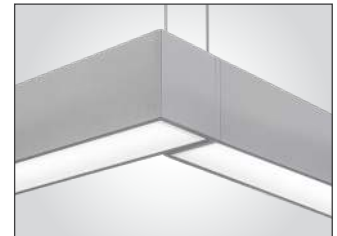
SUS.163/2/2M
2M 2pcs suspension kit
(not 2.5 m)



SUS.163/3/2M
2M 3pcs suspension kit
(for 2.5 m)



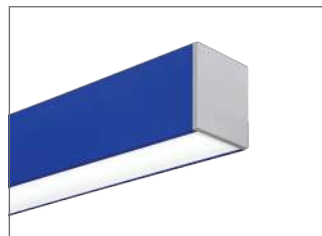
BU.163/180
180° Butt joint bracket



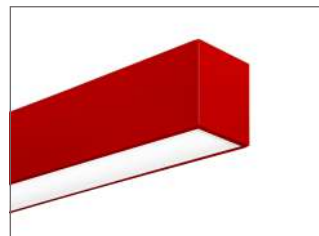
BU.163/90
90° Butt joint bracket



Product variations
Other colours and specifications
available on request



Product variations
Custom colours



Product variations
Custom colours



PT001
Diffuser removal tool