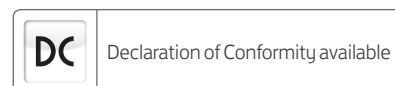
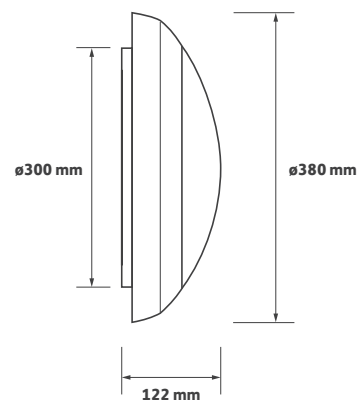


Key Features

- ▶ Stylish contemporary IK10 IP65 LED Bulkhead
- ▶ High performance UL94 polycarbonate body
- ▶ Twist and lock bezel to conceal fixings
- ▶ Tridonic LED Boards and Driver
- ▶ IP65 sealed against liquid and dust ingress
- ▶ IK10 Rated - Impact tested to BSEN2262
- ▶ Dimming and EM options
- ▶ Integral sensor options
- ▶ Back lit halo effect base option
- ▶ Bezel colour finish options
- ▶ Choice option also available, 30,000h, L90/F10

Technical Drawing



Ordering Information

Output (Lm)	Power (tcW)	Colour	Model Ref.
1075	12	830	167.001
1075	12	840	167.002
1450	17	830	167.003
1450	17	840	167.004

Options

Please select from the options below.

Black Bezel	/BL
Back lit halo effect	/HALO
Anti Tamper gear tray screws	/AT
Anti Tamper steel bezel - black	/ATB
SwitchDIM, DALI or DSI	/ECO
Integral Sensor On - Off	/SO
Integral Sensor On - 10% Dim	/SD
Integral Emergency	/EMI

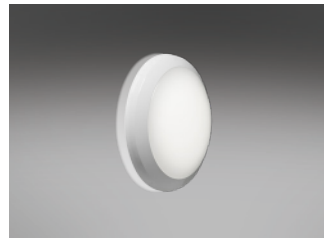
167 Series Options and Accessories



Options



/BL
Black bezel



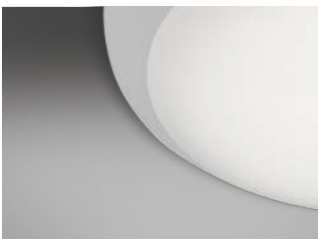
/HALO
Back lit halo effect body



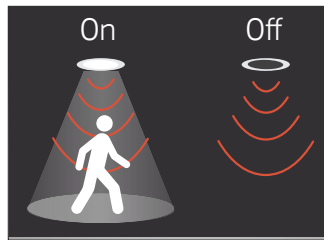
/AT
Anti-tamper gear tray screws



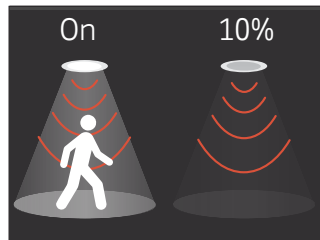
/ATB
Anti-tamper vandal resistance steel bezel and fixings



/EMI
Integral emergency conversion



/SO
Integral motion sensor on/off



/SD
Integral motion sensor on/10% dim

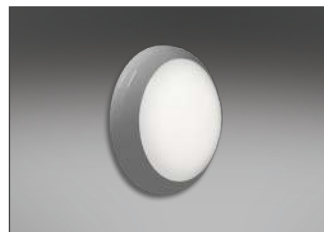


IP65 Range
Our other IP65 products

Product Variations (PV)



Product variations
Other colours and specifications available on request



Product variation
Grey trim



Product variation
Antimicrobial enclosure - Protects against 99.99% of bacteria including MRSI and E.COLI over the life of the product