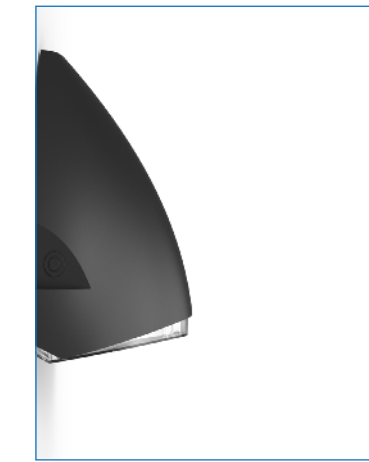
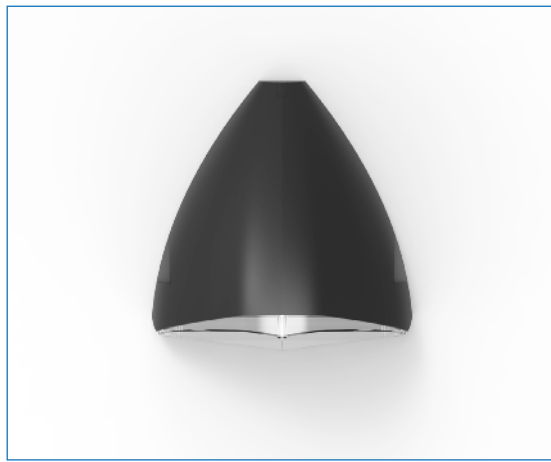
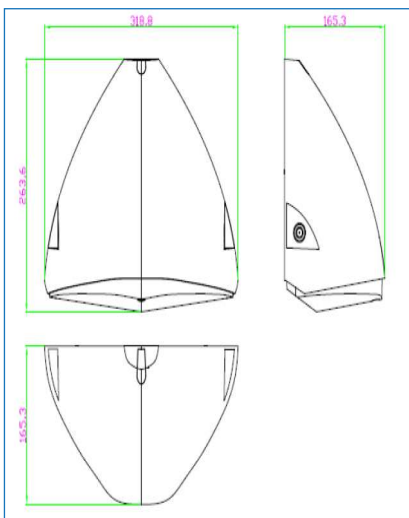




Specification	
Input Voltage	220-240V AC
LED Chips	2835 SMD (84pcs 3000K + 84pcs4000K)
LED Forward Voltage / Current	33-37.2V / 150MA
Driver	TCI Driver – FOR FLAT 30 BI/TCI/127573 CN
Power Factor	>0.9
Life (H)	50000
Operating Temperature)	From -20C- 40C
Class / IP / IK	Class I / IP65 / IK10
Running Current / Inrush Current	0.13A / 10A for 100µs
Beam Angle	120°

Physical Data	
Material / Finish (RAL)	RAL7016, Anthracite/ RAL9002, Light Grey
Colour	Anthracite/ Light Grey
Installation Method	Surface mounted



KEY FEATURES

- Class I / IP65 / IK10
- Upto 70% of energy savings
- 50,000 Hours life
- Adjustable Power & CCT
- 120-125 LM/W
- 3000K / 4000K / CRI80 / SDCM<6

Ordering Information			
Part Number	Power (W)	Lumen	Colour Temp
AL-SHA14-13W/18W/28W-AN	13/18/28	1700/2500/3500	3000K >120LM/W, 4000K >125LM/W
AL-SHA14-13W/18W/28W-LG	13/18/28	1700/2500/3500	3000K >120LM/W, 4000K >125LM/W