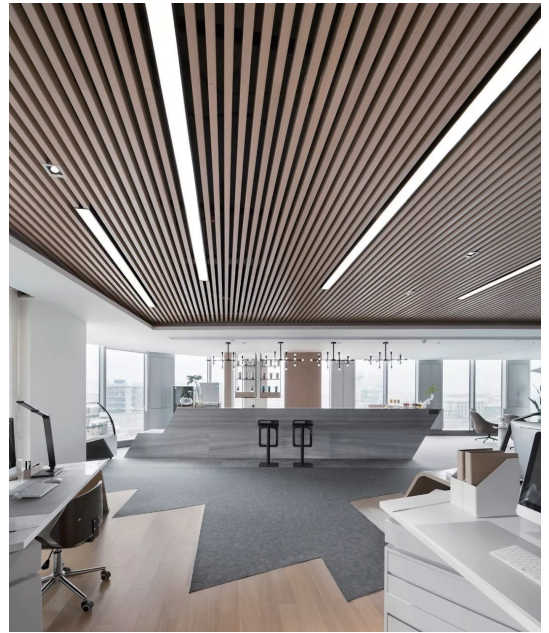
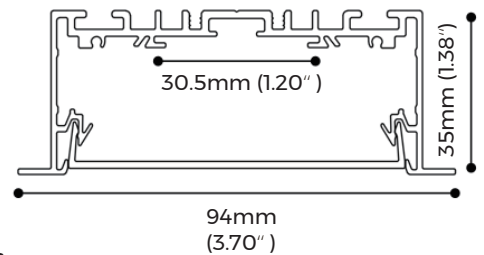


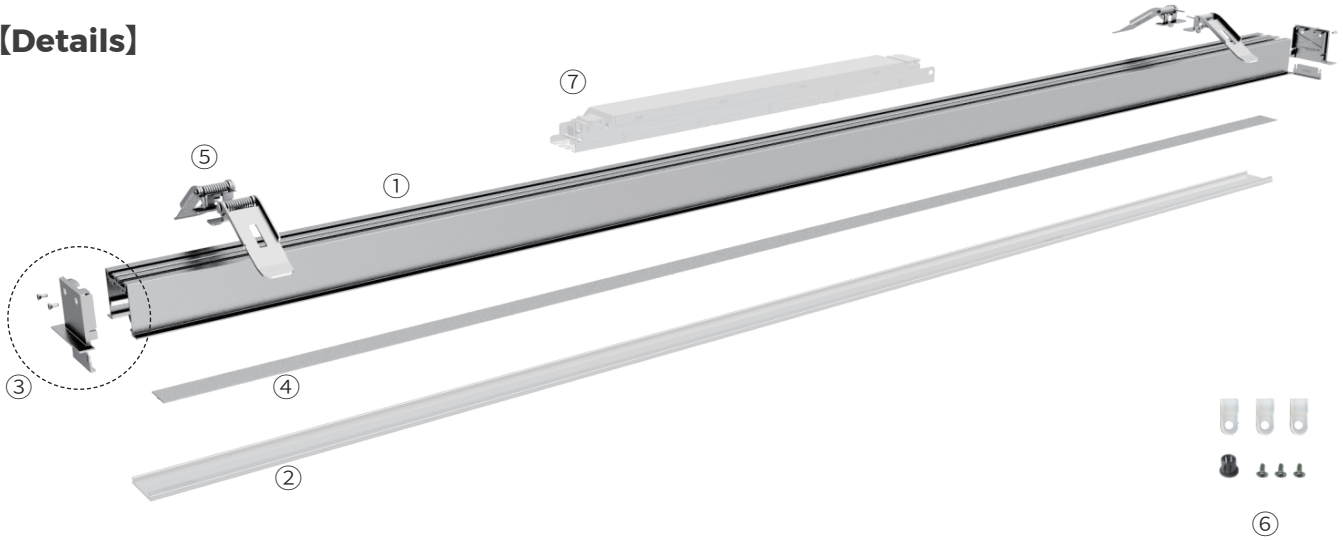
AL-BE9435



【Features】

- Innovative buckle plug, no light leakage
- PC diffuser imported from Germany, producing homogeneous & soft lighting
- Provide standard extenders, customizable interconnected corners
- Recessed installation, convenient and fast

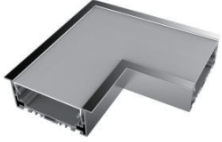


[Details]

[Standard Configuration]

Picture	Item	Parameter
	① Profile	Profile weight: 2.55kg/2.5m Size: L2500*W94*H35mm Material: AL6063-T5 Surface processing: Anodizing
	② Cover	Type: Frosted diffuser Material: PC ; Light transmittance: 75% Size: L2500*W72.3*H10mm PC Feature: The diffuser will extend (shrink)0.8mm/m when the temperature raises (drops) 10 C
	③ End cap	Model: EC-BE9435FSS Size: L94*W35*H15mm
	⑤ Recessed buckle	Model: RB-02 Size: L68.5*W35*H31.6mm

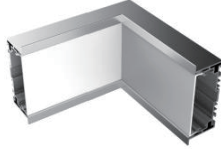
[Corners]

L-type corner (L90-BE9435)



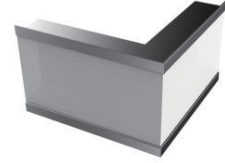
Al6063-T5
L157*W157*H35mm

L-type corner (L90-BE9435)



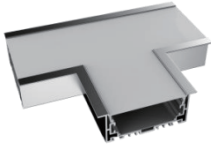
Al6063-T5
L150*W150*H94mm

L-type corner (L90-BE9435)



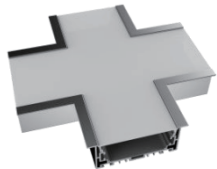
Al6063-T5
L150*W150*H94mm

T-type corner (T90-BE9435)



Al6063-T5
L200*W157*H35mm

X-type corner (X90-BE9435)

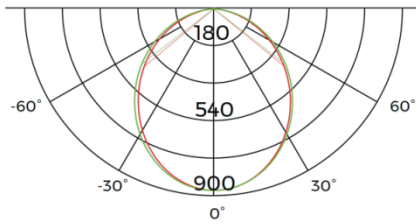


Al6063-T5
L200*W200*H35mm

* The corners can be provided with or without light source

[Optical Parameter]

DL8280-24V-18mm light source, frosted diffuser



1m	312.8,877.3lx	243.14cm
2m	78.20,219.3lx	486.29cm
3m	34.75,97.48lx	729.43cm
5m	12.51,35.09lx	1215.71cm
7m	6.384,17.90lx	1966.01cm
Height	Eavg,Emax	Angle:101.12deg Diameter