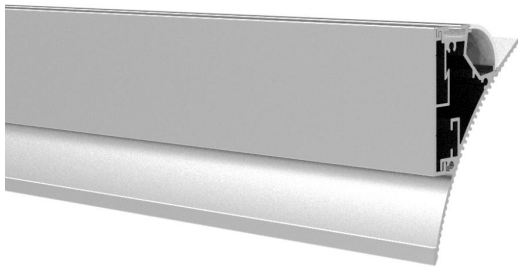
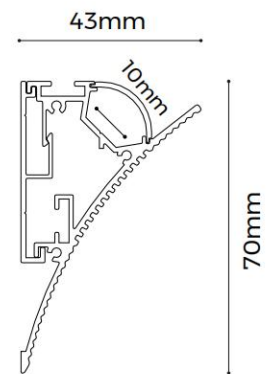


## AL-LG7043






### Features

- Apply to gypsum lines, integrated into architecture.
- Arc cover design, wider luminous surface.
- Detachable clasp design, easy to install
- AL6063-T5 aluminum profile with high-quality surface treatment.



## Standard Configuration

Picture	Item	Parameter	Model
	Profile and pendant	Profile weight: 1.63kg/2.5m Pendant weight: 0.53kg/2.5m Profile Size: L2500*W41.6*H70mm Pendant Size: L2500*W7.5*H43.5mm Material: AL6063-T5 Surface processing: Anodizing	/
	Cover	Type: Frosted diffuser Material: PC Light transmittance: 70% Size: L2500*W18.9*H6.5mm PC Feature: The diffuser will extend (shrink) 0.8mm/m when the temperature rises (drops) 10°C.	/
	End caps	Size: L70*W43*H2mm Material: AL	AL-EC-LG7043

## Optical Parameter

(D6140-24V-8mm light source, frosted diffuser)

