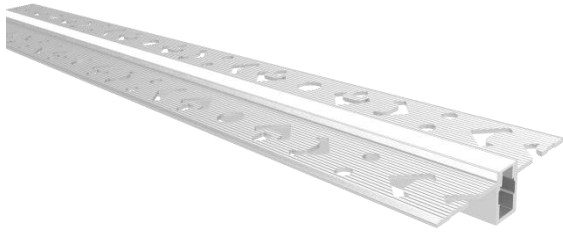
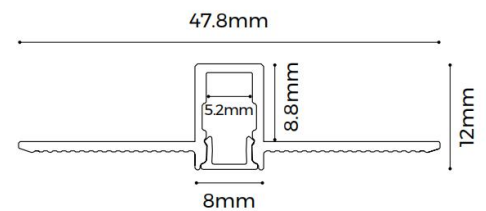


AL-LR0812






Features

- 10mm luminous surface, rimless recessed design, integrated into architecture.
- AL6063-T5 aluminum profile with high-quality surface treatment.
- Close-fitting end cap design without screw, make installation more convenient.



Standard Configuration

Picture	Item	Parameter	Model
	Profile	Profile weight: 0.42kg/2.5m Size: L2500*W47.8*H12mm Material: AL6063-T5 Surface processing: Anodizing	/
	Cover	Type: Frosted diffuser Material: PC Light transmittance: 55% Size: L2500*W6.4*H3.7mm PC Feature: The diffuser will extend (shrink) 0.8mm/m when the temperature rises (drops) 10°C.	/
	End caps	Size: L12*W7.8*H8mm Material: PC	AL-EC-LR0812

Optical Parameter

(D6140-24V-4mm light source, frosted diffuser)

