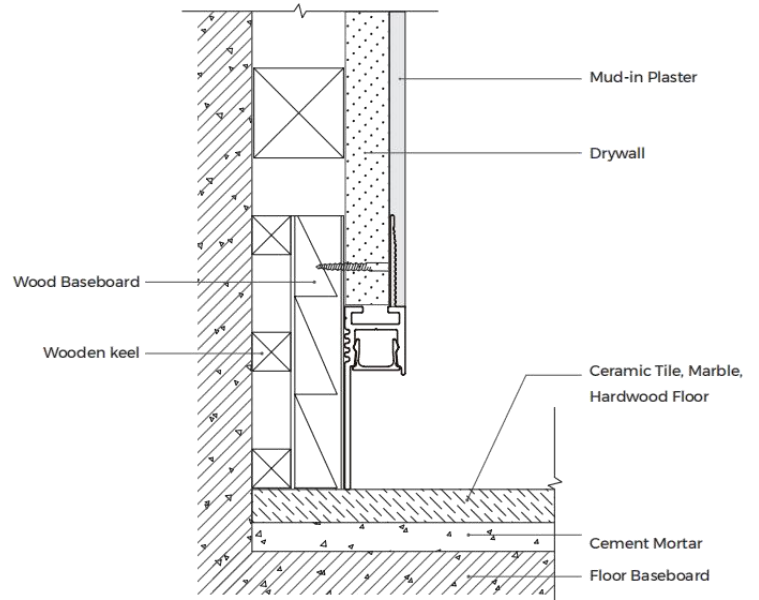
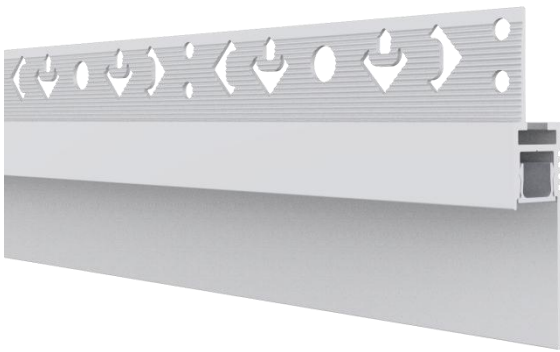
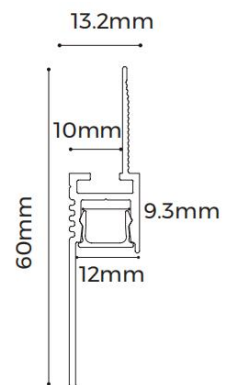


AL-SK6013A





Features

- Apply to skirting board , integrated into architecture.
- Indirect lighting design integrates architectural and lighting effects.
- AL6063-T5 aluminum profile with high-quality surface treatment.



Standard Configuration

Picture	Item	Parameter	Model
	Profile	Profile weight: 0.78kg/2.5m Size: L2500*W13.2*H60mm Material: AL6063-T5 Surface processing: Spraying RAL9003	/
	cover	Type: Frosted diffuser Material: PC Light transmittance: 80% Size: L2500*W10.3*H6.8mm PC Feature: The diffuser will extend (shrink) 0.8mm/m when the temperature rises (drops) 10°C.	/

Optical Parameter

(D6140-24V-8mm light source, frosted diffuser)

