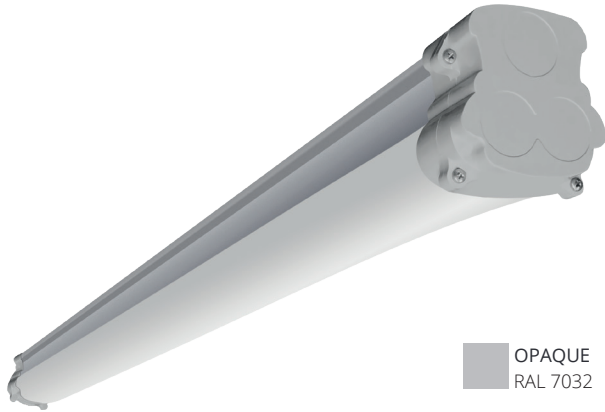


## RUNNER L EXPROOF



OPAQUE  
RAL 7032


**II 3G Ex EC IIC T5 Gc**  
**II 3D Ex TC IIIC (T 100°C) Dc IP66**

**EFFICIENCY**  
 up to  
**149+  
lm/W**

**OPERATING TEMPERATURE**  
**+40°C  
-20°C**

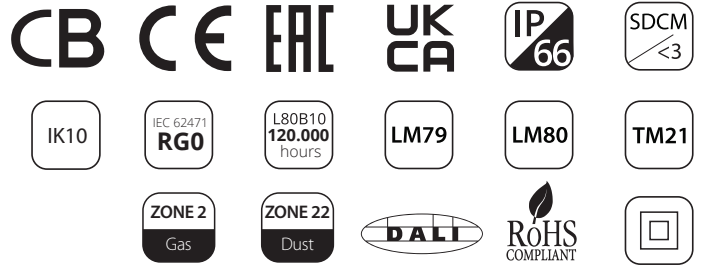
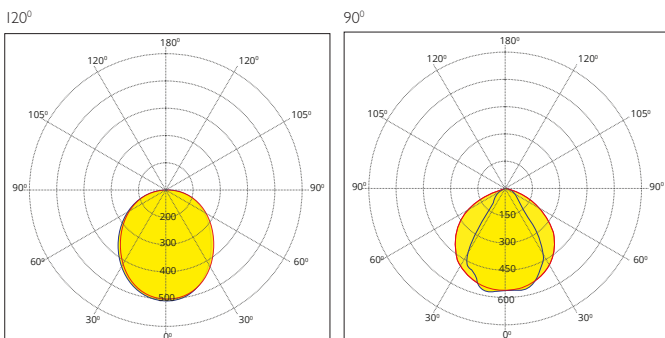
**VOC PROTECTED**  
**VOC**  
 protected  
 light source

**IMPACT PROTECTION**  
**IK10**

### Application Areas

- Oil Refineries • Chemical and Petrochemical Facilities
- Offshore Facilities
- Industrial Facility Environmental Zones

### Beam Angles



### Specifications

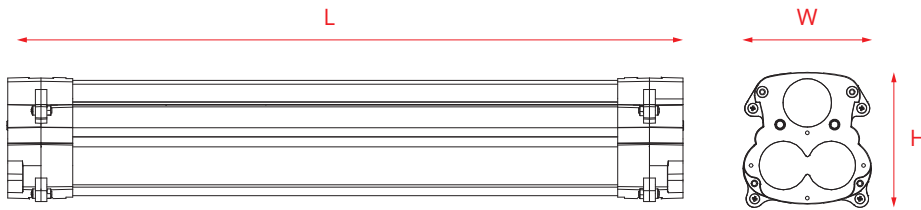
- **IP66** protection
- Extruded PC body and aluminium heatsink
- Lighting grade PC diffuser
- **IK10** impact protection
- Over **60.000 hours** life according to LM80 and TM21 standard
- Up to **157+ lm/W** efficiency
- Volatile organic compounds (VOC) protected light source
- **-20°C / +40°C** operating temperature
- Aluminum PCB (2,0 W/mK)
- SMD PCB connector
- Special silicone gasket
- Multiple mounting options
- Category: **Grup II / Category 3GD**
- Setup: **Zone 2(Gas) / Zone 22(Dust)**
- Standard: EN 60079-0:2018, EN 60079-15:2015, EN 60079-31:2014
- Measurements according to EN 60598-1 standards
- Photometric measurements according to IESNA-LM-79-08

### Optional

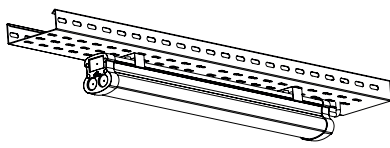
- Sensor, dimming, wireless connection features
- I-10V, DALI automation integration
- Emergency mode



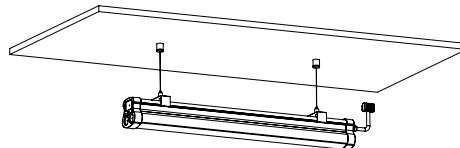
### Dimensions



### Mounting Options

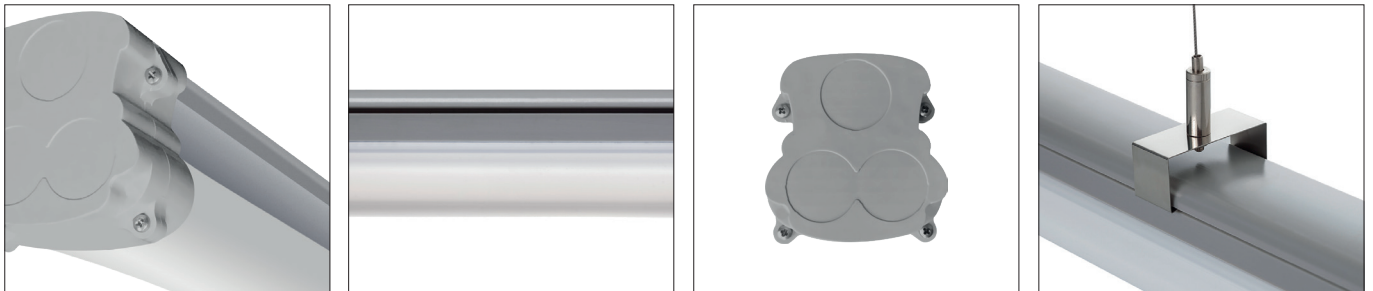


Cable Tray Mounted



Ceiling Mounted (Suspended)

### Product Photos



### Runner L Exproof

	W	lm	lm/W	LED	▲	K	AC	CRI	IP	L (mm)	W (mm)	H (mm)	gr.
AL-PLUS 18.60	18	2594	144	LUMILEDS / SEOUL	120°	4000	220-240VAC	>80	IP66	600	69	75	810
AL-LUS 24.75	24	3728	144	LUMILEDS / SEOUL	120°	4000	220-240VAC	>80	IP66	750	69	75	1025
AL-PLUS 29.120	29	4215	145	LUMILEDS / SEOUL	120°	4000	220-240VAC	>80	IP66	1200	69	75	1235
AL-PLUS 36.120	36	5187	144	LUMILEDS / SEOUL	120°	4000	220-240VAC	>80	IP66	1200	69	75	1235
AL-LUS 38.150	38	5511	145	LUMILEDS / SEOUL	120°	4000	220-240VAC	>80	IP66	1490	69	75	1620
AL-PLUS 50.150	50	7457	149	LUMILEDS / SEOUL	120°	4000	220-240VAC	>80	IP66	1490	69	75	1620

Power and lumen values are within ± 5% tolerance.

Lumen Multiplier Table

CRI	3000K	4000K	5000K	6500K
80	0,95	1	1	1
90	0,81	0,86	0,86	0,86