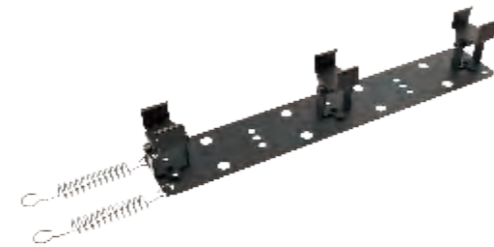


Part No.	Description	Picture
----------	-------------	---------

adjustable stainless mounting clip



Part No.	Description
----------	-------------

2.03.ww.007

for tree fixing mounting clip

**AL-3D Flex Grazer**

IP67 high power 3D flex LED grazer has been designed with anti-glare housing, flexible, easy to fix, 24V DC, power:32W in 1200mm length  
22W in 1200mm length (RGB/RGBW)

Maximum 1200mm length,  
Beam angle :15°/20°/30°/20° x 40°/20° x 50°  
20°/35°/45°/55°/20 x 45°(RGB/RGBW)

it is an ideal product for indoor and outdoor architectural lighting project

Working Temperature:-40°C~+45°C

Net Weight:1048g/1.2meter

suit for class 2 power unit,  
maximum connected power not more than 100W

